

FIVE CHRISTMAS ROUNDS

Arner Burt

I *The Carillon*

Lis - ten to the car - il - lon tin - tin - a - bu - la - ting

Car - ols in the night, through the star - ry light. Ding, dong!

Hear it chime! Ring - ing mer - ri - ly when it's Christ-mas time.

The musical notation for 'The Carillon' is in treble clef with a key signature of one sharp (F#) and a common time signature (C). It consists of three staves. The first staff contains the first line of music with lyrics 'Lis - ten to the car - il - lon tin - tin - a - bu - la - ting'. The second staff contains the second line of music with lyrics 'Car - ols in the night, through the star - ry light. Ding, dong!'. The third staff contains the third line of music with lyrics 'Hear it chime! Ring - ing mer - ri - ly when it's Christ-mas time.' and ends with a double bar line and repeat dots. There are fingerings 2, 3, and (4) indicated above the notes.

II *High as We're Able*

War - bl-ing mer - ri - ly through a new car - ol, we sing high as we're

a - ble, a - round the old din - ing room ta - ble. Oh,—

The musical notation for 'High as We're Able' is in treble clef with a key signature of one sharp (F#) and a 6/8 time signature. It consists of two staves. The first staff contains the first line of music with lyrics 'War - bl-ing mer - ri - ly through a new car - ol, we sing high as we're'. The second staff contains the second line of music with lyrics 'a - ble, a - round the old din - ing room ta - ble. Oh,—' and ends with a double bar line and repeat dots. There are fingerings 2, 3, 4, (5), and (6) indicated above the notes.

III *Colors Twinkling*

Which of all the col - ors twink - ling on the tree is pret - ti - est?

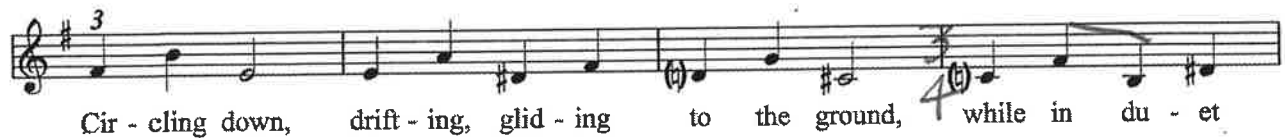
Are the red, bright pink or yel - low ones the best? Ev - en though the

white goes on top the tree, I think blue's the nic - est.

The musical notation for 'Colors Twinkling' is in treble clef with a key signature of one sharp (F#) and a common time signature (C). It consists of three staves. The first staff contains the first line of music with lyrics 'Which of all the col - ors twink - ling on the tree is pret - ti - est?'. The second staff contains the second line of music with lyrics 'Are the red, bright pink or yel - low ones the best? Ev - en though the'. The third staff contains the third line of music with lyrics 'white goes on top the tree, I think blue's the nic - est.' and ends with a double bar line and repeat dots. There are fingerings 2 and 3 indicated above the notes.

© 2004 W. Arner Burt
All Rights Reserved

IV *Falling Snowflakes*



V *Cider, Cookies, Doggie*

